

Plasma Perfecting

THE BEAUTY DEVICE SPECIALIST

Radio Frequency Microneedling

plasma



Table of Contents

| | |
|---|----|
| What is fractional radio frequency microneedling? | 3 |
| Indications | 5 |
| Contraindications | 6 |
| Equipment list | 7 |
| Cartridges | 7 |
| Installation | 8 |
| System operation | 10 |
| Settings | 12 |
| Suggested treatment guidelines | 12 |
| Before the treatment | 14 |
| Treatment | 15 |
| After care | 16 |
| Side effects | 16 |

Disclaimer:

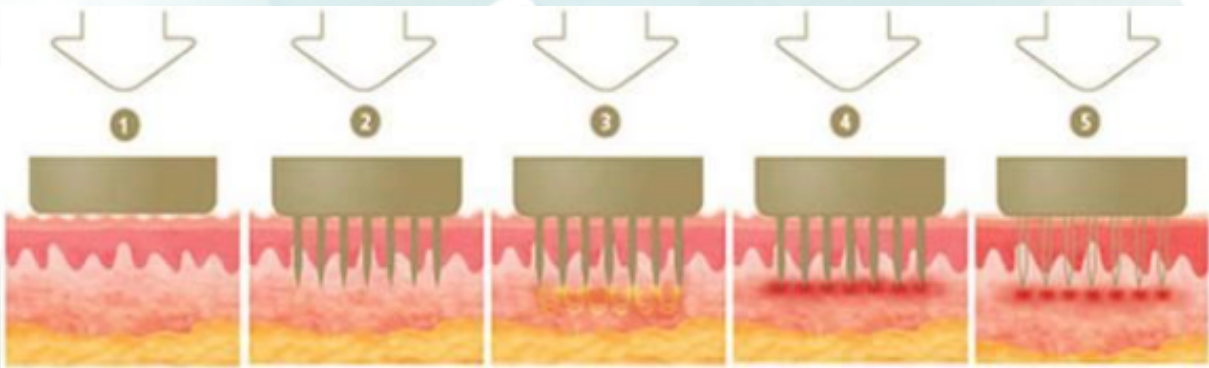
- We aren't medical professionals and we do not have a medical professional on staff.
- We make no guarantees on any products.
- All products are drop shipped Korea, EU, India or China.
- Products have not been approved by FDA and statements made regarding these products have not been evaluated or approved by FDA.
- Any representation by any Plasma Perfecting employee or owner reflects their personal experience and is not reflective of medical review.
- You may not use our products for any illegal or unauthorized purpose nor may you violate any laws in your jurisdiction.
- It is the consumer's responsibility to research their Country and State laws.

What is fractional radio frequency microneedling?

Fractional RF microneedling is a combined treatment where you target dermis with both needles and heat from RF. Fractional refers to that only a fraction of the skin is being effected.

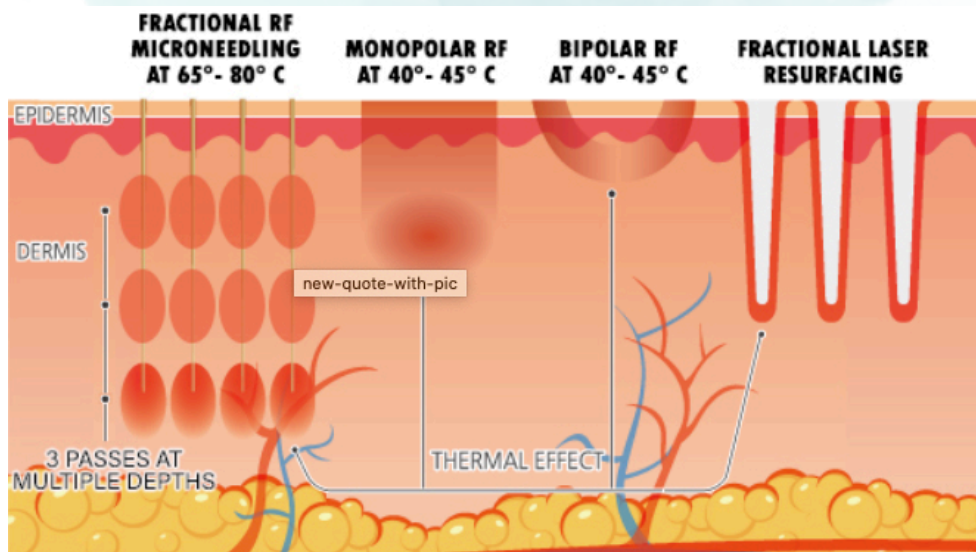
Dermis is the part of the skin that is responsible for wrinkles and also the part of the skin where collages and elastin is formed.

You will get the benefits from both a microneedling and a RF treatment with the possibility to set the depth, output energy and duration time very specific to target different skin conditions.

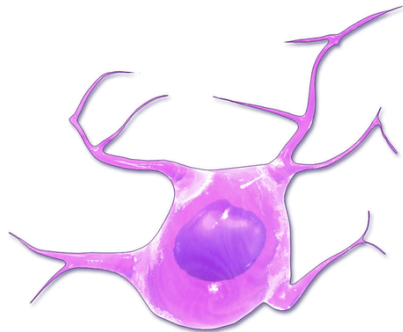
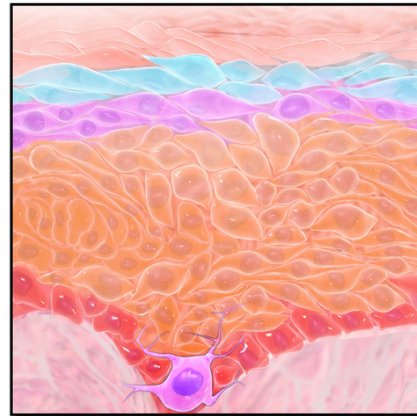
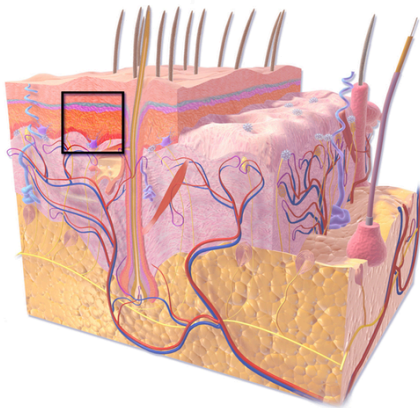


The trauma from the needles stimulate the bodys healing process and neocollagenesis occurs as a natural component of wound repair. New collagen and elastin will be created.

The RF energy stimulates collagen and contracts the collagen fibers.



Unlike other treatments, targeting the same conditions, you can be very precise and specific with this device. The downtime will be both easier and shorter compared to, for example, laser treatments. The risks for PIH, post inflammatory hyperpigmentation, are also less since the pigment cells, melanocytes, are localised in the basal layer of epidermis.



Melanocyte

You can treat all skin and Fitzpatrick types, including dark skin which is sometimes unsuitable for other types of treatments, and the treatment can be done/performed throughout the year for clients over 18 years.

Indications

What conditions does RFMN treat?

- ✓ skin laxity - the treatment will lift and tighten the skin
- ✓ fine line and wrinkles
- ✓ scars/acne scars (do not use on keloid or hypertrophic scars)
- ✓ pigmentation spots
- ✓ striae - stretch marks
- ✓ uneven texture and skin tone
- ✓ enlarged pores
- ✓ to some extent the treatment can dissolve fat in the subcutaneous layer
- ✓ hyperhidrosis

The treatment will rejuvenate the skin and give it a radiant glow.



Contraindications

Who is not a candidate for RF Microneedling?

(Clients/persons who have:)

- metal implants in the treatment area, even contraceptive coils
depending on depth of implant and intensity of treatment
- pacemaker or any other electronic implant in the body
- body infection and fever
- severe active inflammatory acne
- use any Vitamin A products for the last 6 months
- cancer and/or radiation treatment the last 12 months
- open wounds, rash, psoriasis or eczema in treatment area
- tattoos in the area
- history of keloid scar formation
- oral herpes simplex breakout or other heat triggered diseases
- injections
 - Botulinum toxin in the area (wait at least 2 weeks)
 - Synthetic fillers in the area (wait 2 - 4 weeks, deeper injections can often be treated sooner)
- have had any of these, or similar, treatments: deep chemical peel, ablative laser treatment, plasma fibroblast or any other facial resurfacing treatment, they need to wait 12 weeks
- pregnancy
- impaired immune due to diseases like HIV/AIDS
- be cautious with some medical conditions such as diabetes and thyroid dysfunctions
- hemophilia/bleeding disorders, vascular disease
- allergies (metal, anesthetics)
- unrealistic expectations

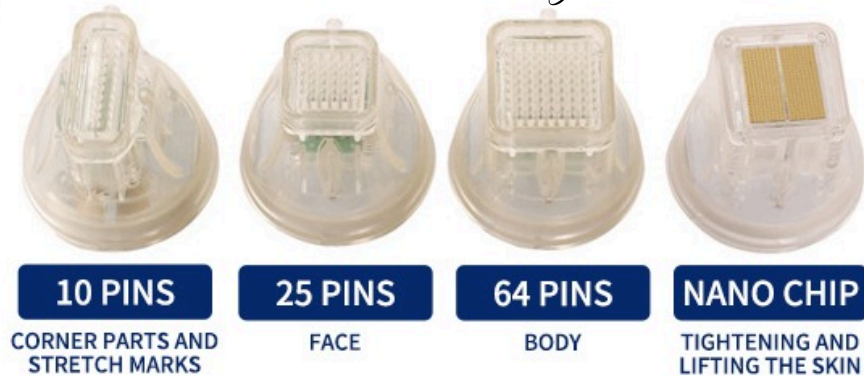
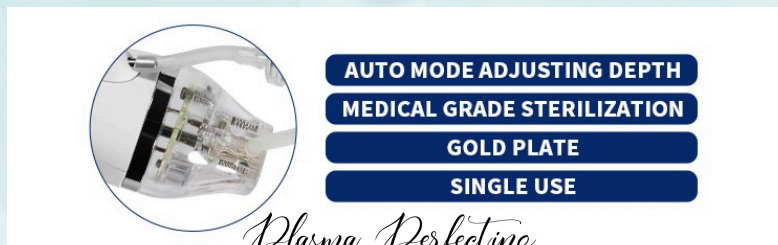
Equipment list

- ✓ power cable
- ✓ holder for handpiece (one or two depending on model)
- ✓ RF Microneedling handpiece
- ✓ cold hammer handpiece
- ✓ cartridges - nano, 10 pins, 25 pins and 64 pins
- ✓ extra connectors
- ✓ RF Microneedling device

Cartridges

All needles are insulated, meaning the RF energy will be concentrated to the tip of the needle. The insulated needles control the treatment to be accurate and precise. Decreasing the risk of PIH.

With the Nano chip cartridge you can do a topical, non invasive, RF bi-polar treatment.

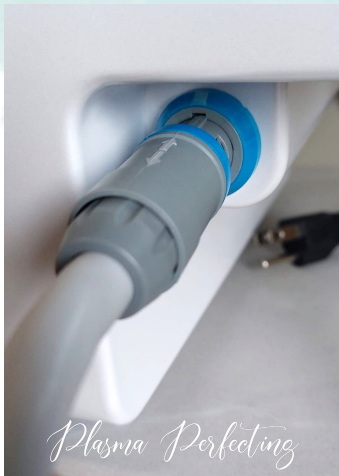


Installation

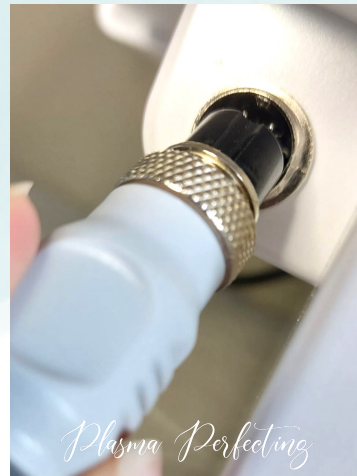
1. Attach the handpiece holder with included screws. Please locate screws on the underside of the device. The wider holder is for the microneedling hand-piece and should be mounted on the right side.



2. Connect the hand-piece carefully. Look at the markings and patterns of the plugs so you make sure to put them in correctly into the power source.



RF MN handpiece



Cold hammer handpiece

3. Connect the power cable.



4. Check the markings on the hand-piece and the cartridge. Connect the cartridge to the hand-piece and when you placed it correctly, lock it by twisting/rotating it to the right. Connect the connecting tube.

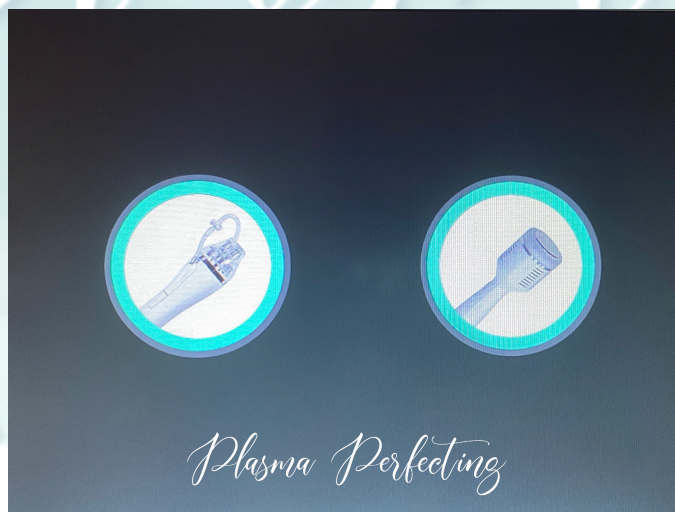


System operation

1. Turn on the power switch.
2. Push the circular-centered button on front of device.



3. Choose handpiece



4. Choose F for face or B for body.
Adjust settings to the area and condition you are treating.
Press start.

Manual mode: use the button on the handpiece to activate the needles

Auto mode: the device will sense when the handpiece touches the skin and will be automatically activate the needles.



Face F

Body B

Language settings

Treatment area

Times 0

Time 60:00

Depth 0.2mm

Speed 0.1S

Suction 0

RF 10 W

Decrease/Increase

How many times the device has been activated during the treatment

Treatment time

Needle depth

Duration of RF output

Suction effect

RF output power

Settings

Treatment time: 0 - 60 min

Needle depth: 0.1 - 3.5 mm (2.0 mm face, 3.5 mm body)

Speed: 0.1 - 0.5 sec

Suction: 0-2 (tube must be connected to cartridge)

RF: RF bi-polar output power

Suggested treatment guidelines



| AREA | DEPTH | SPEED, ENERGY | SUCTION | RF |
|----------|------------|---------------|---------|---------|
| FOREHEAD | 0.5-1.0 mm | 0.2-0.3 | 1-2 | 60-110W |
| FACE | 1.0-1.5 mm | 0.2-0.3 | 1-2 | 60-110W |
| EYE AREA | 0.5-1.0 mm | 0.2-0.3 | 1-2 | 60-110W |
| JAWLINE | 0.5-1.2 mm | 0.2-0.3 | 1-2 | 60-110W |
| NOSE | 0.5-1.0 mm | 0.2-0.3 | 1-2 | 60-110W |
| NECK | 1.0-1.5 mm | 0.2-0.3 | 1-2 | 60-110W |
| SCARS | 1.0-2.0mm | 0.2-0.3 | 1-2 | 60-120W |
| STOMACH | 1.0-3.0 mm | 0.2-0.3 | 0-1 | 60-120W |

Disclaimer!!

Heat based treatments has the ability to dissolve fat. Treating with too much heat/energy or treatments without a 4-6 week intermission can lead to unwanted outcomes/results.

Always use with caution to avoid fat dissolving in unwanted areas. It's hard to know how different clients will react to the treatment.

You can do 20-50% overlap. Start with the deepest setting of your choice and then you can decrease the depth for the next pass if you want to effect a larger area.

For example: 2.0 mm first pass, 1,5 mm second pass, 1.0 third pass.

Be careful and start with lower settings and less overlap in areas where you don't want to risk loosing any fat. Clients respond differently to heat based treatments. For contouring/shaping treatments, like jawline and body, you can use more intensive settings.

If you do 1 - 2 passes you can use more overlap and if you're doing 3 passes you can lower the overlap percentage. The more treated areas the higher treatment intensity.

Don't over-treat your client.

Always make sure the needles are withdrawn all the way back into the cartridge before you move the handpiece so you don't burn the epidermis and minimise the risk of grid marks on the skin.

Use a lower power setting when treating up to 1 mm to minimize the risk of PIH.

When treating darker skin types, start with a lower power setting to see how the skin reacts and minimise the risk of PIH.

The treatment can be done every 4 - 6 weeks. Number of recommended treatments can vary from 3 - 5 or 8 depending on how the client reacts to the treatment and what conditions are treated.

The client should see an improvement after the first treatment in a few weeks. Final results are usually seen after six months.

After the series of treatments it is recommended to do it once a year for maintenance.

Fully results are often seen after three months, but can take even longer time for some clients and different parts of the body.

Before the treatment

Make sure the client follows proper guidelines before scheduled treatment:

- ✓ no botox in the area for 2 weeks
- ✓ no filler in the area for 2 - 4 weeks
- ✓ RF (professional) or non-ablative lasers for 2-3 weeks
- ✓ use of NSAID products 7 days
- ✓ stay away from intense sun, use SPF to avoid sunburn or red, irritated skin
- ✓ no anti coagulant medication last 10 days

Always make sure you have done a proper review with your client and covered all the contraindications, possible side effects and the conditions the client wants to target.

plasma
P E R F E C T I N G



Treatment

The treatment area, devices and accessories should always be clean and disinfected before you start the treatment.

1. Clean the treatment area properly
2. Numb the area (Customer preference)
3. Remove numbing cream. Disinfect the area. Always make sure the skin is completely dry after wiping with alcohol. (Alcohol is flammable and should always be used carefully with energy based devices.)
4. Start the treatment on dry skin.
5. When the treatment is done apply a sterile serum of your choice to enhance the treatment effect, while the channels in the skin are still open after the needle incision. This treatment works very well in combination with PRP.
6. *Optional:* Go back in the menu and choose the cold hammer. Start with 50% setting and use on the treatment area and increase power level according to clients comfort. You can use the cold hammer for 10-15 min depending on size of treatment area. If the skin is dry, stamp the hand-piece instead and avoid dragging it over the treated skin.
7. Inform the client of what to expect the following days. Hand out after care information.

After care

You might experience both some redness and swelling after the treatment.

The treatment can vary in downtime according to intensity, size of treatment area, what part of the body is treated and personal health conditions.

- ✓ Avoid any contact with the skin for one day.
- ✓ SPF and mineral make up can be applied next morning
- ✓ avoid hot showers, hot tubs and sauna for 24-72 hours
- ✓ avoid exercise for 24-72 hours
- ✓ avoid sun exposure for two week (wear a hat and re-apply SPF during the day)
- ✓ use mild skin care products the following days
- ✓ wait with stronger acids and peels for 14 days

Side effects

RF Microneedling is considered to be a safe and minimally invasive treatment when performed correctly. Downtime is short and with few side effects. Any treatment has risks, please discuss any risks with the client, before the treatment.

- the treatment can be uncomfortable and painful
- erythema (redness) usually subsides after 24 hours but can last for up to 2 weeks
- dryness, itching and some peeling
- edema - swelling
- acne flare-up
- cold sore break out
- pin point bleeding
- mild bruising

Contact Us

We are here to help!
If you have any questions, please reach out to
our team.



hello@plasmaperfecting.com



702-935-4400



www.plasmaperfecting.com



[plasma.perfecting](https://www.facebook.com/plasma.perfecting)



[@plasma.perfecting](https://www.instagram.com/plasma.perfecting)

